



TRES-OR's VENDOME DIAMOND
PROJECTS IN THE
COROMANDEL AREA
BRAZIL



Vendome Properties

Vendome Mine Mineração Importação Exportação e Pesquisa Ltda. and Antônio Ione Teixeira De Jesus (collectively referred to as “**Vendome**”) provides Tres-Or’s 100% owned subsidiary Vaaldiam (“VBM”) with an exclusive right to develop kimberlite diamond deposits on their properties, situated in the Coromandel diamond district of Minas Gerais State, Brazil.

Vendome holds several blocks of mineral licenses, covering roughly 29,175 hectares. Tres-Or’s priority exploration will focus on 5 blocks where the 27 kimberlites are located and where there is a long history of alluvial diamond recoveries from river gravels that cross-cut the district.



Vendome Permits in the Coromandel Area

OWNER	Priority	Claim	AREA (ha)	STATE	Area	STATUS
Vendome	P1	831285/2017	1,962.58	Minas Gerais	Coromandel	Exploration permit
Vendome		832088/2017	195.57	Minas Gerais	Coromandel	Exploration permit
Vendome		833717/2013	1,938.33	Minas Gerais	Coromandel	Mining application
Vendome		832100/2017	210.9	Minas Gerais	Coromandel	Exploration permit
Antonio Teixeira	P2	830262/2019	1,955.62	Minas Gerais	Coromandel	Exploration permit
Antonio Teixeira		830261/2019	1,930.66	Minas Gerais	Coromandel	Exploration permit
Vendome	P3	831808/2015	689.47	Minas Gerais	Coromandel	Mining Concession
Vendome		833440/2014	827.97	Minas Gerais	Coromandel	Exploration permit
Vendome		831987/2018	1,958.38	Minas Gerais	Coromandel	Exploration application
Vendome		831669/2013	437.77	Minas Gerais	Coromandel	Exploration permit
Vendome	P4	831986/2018	1,829.95	Minas Gerais	Coromandel	Exploration application
Vendome		830610/2011	1,676.90	Minas Gerais	Coromandel	Exploration permit
Antonio Teixeira		830914/2009	49.19	Minas Gerais	Coromandel	PLG application
Antonio Teixeira		830913/2009	44.87	Minas Gerais	Coromandel	PLG application
Vendome		831734/2016	1,723.80	Minas Gerais	Coromandel	Exploration application
Vendome		831733/2016	1,999.87	Minas Gerais	Coromandel	Exploratio application
Antonio Teixeira	P5	832190/2023	885.40	Minas Gerais	Coromandel	Exploration application

Vendome Priority Properties and Associated Kimberlites:

Vendome P1:

- ❖ Sto.Ant. Bonito 2
- ❖ Sto.Ant. Bonito 4
- ❖ Sto. Inacio 7
- ❖ Pedras 1
- ❖ Pedras 2
- ❖ Corrego Manoel 1
- ❖ Guara 9
- ❖ Guara 10
- ❖ Guara 11
- ❖ Guara 18

Vendome P2:

- ❖ Santa Clara 9
- ❖ Santa Clara 11
- ❖ Tamborete 1
- ❖ Tamborete 2
- ❖ Tamborete 3
- ❖ Bravo 11
- ❖ Bravo 12
- ❖ Bravo 13
- ❖ Bravo 15
- ❖ Bravo 16
- ❖ Santa Rosa 5

Vendome P3:

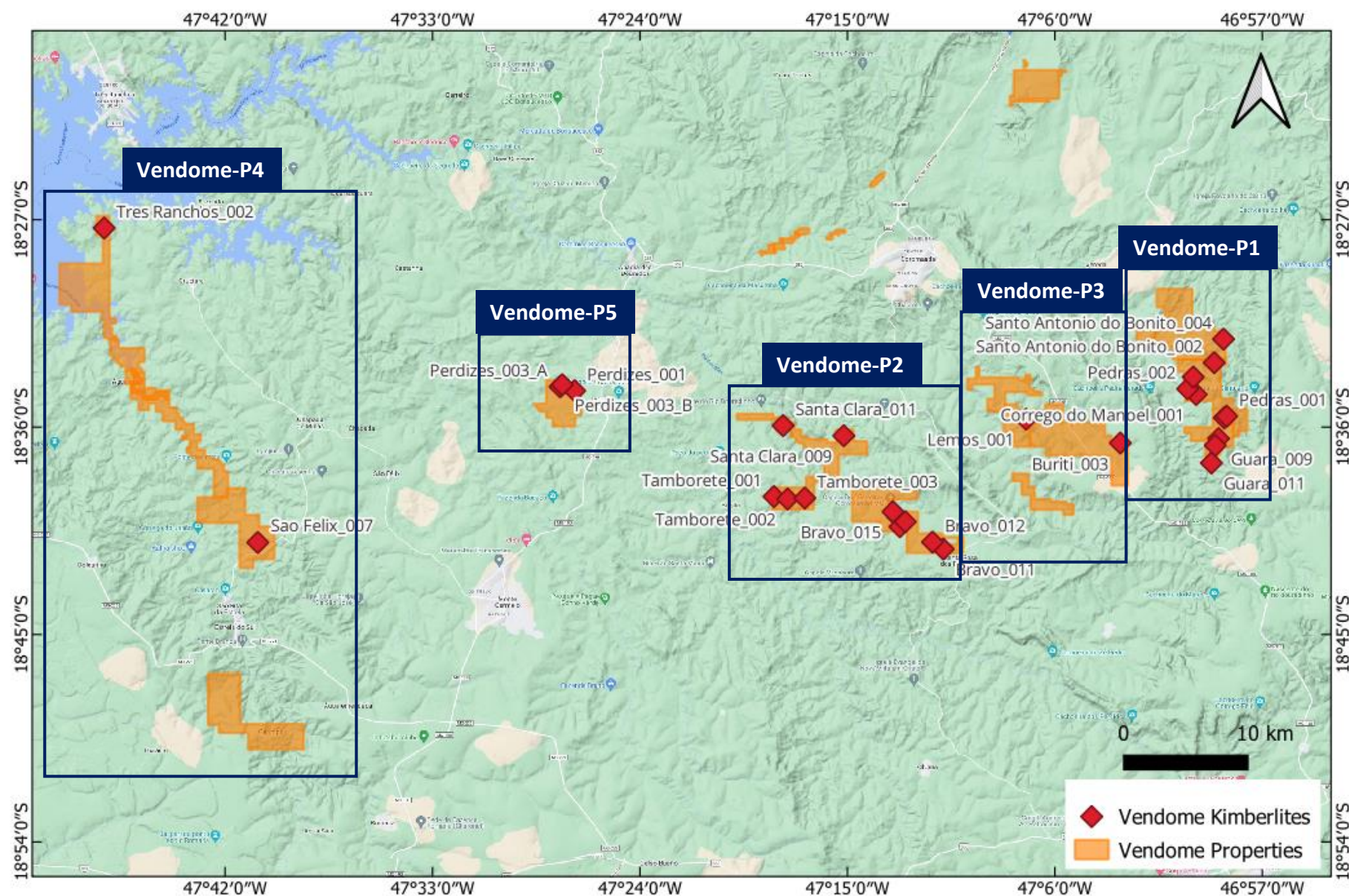
- ❖ Lemos 1
- ❖ Buriti 3

Vendome P4:

- ❖ Três Ranchos 2
- ❖ São Felix 7

Vendome P5:

- ❖ Perdizes 1
- ❖ Perdizes 3A
- ❖ Perdizes 3B



Sto. Inacio River Diamonds - source of largest Diamond recovered in Brazil the Charneca I (428cts - 1940), Charneca II (107cts - 1971); Charneca III (105cts - 1971).

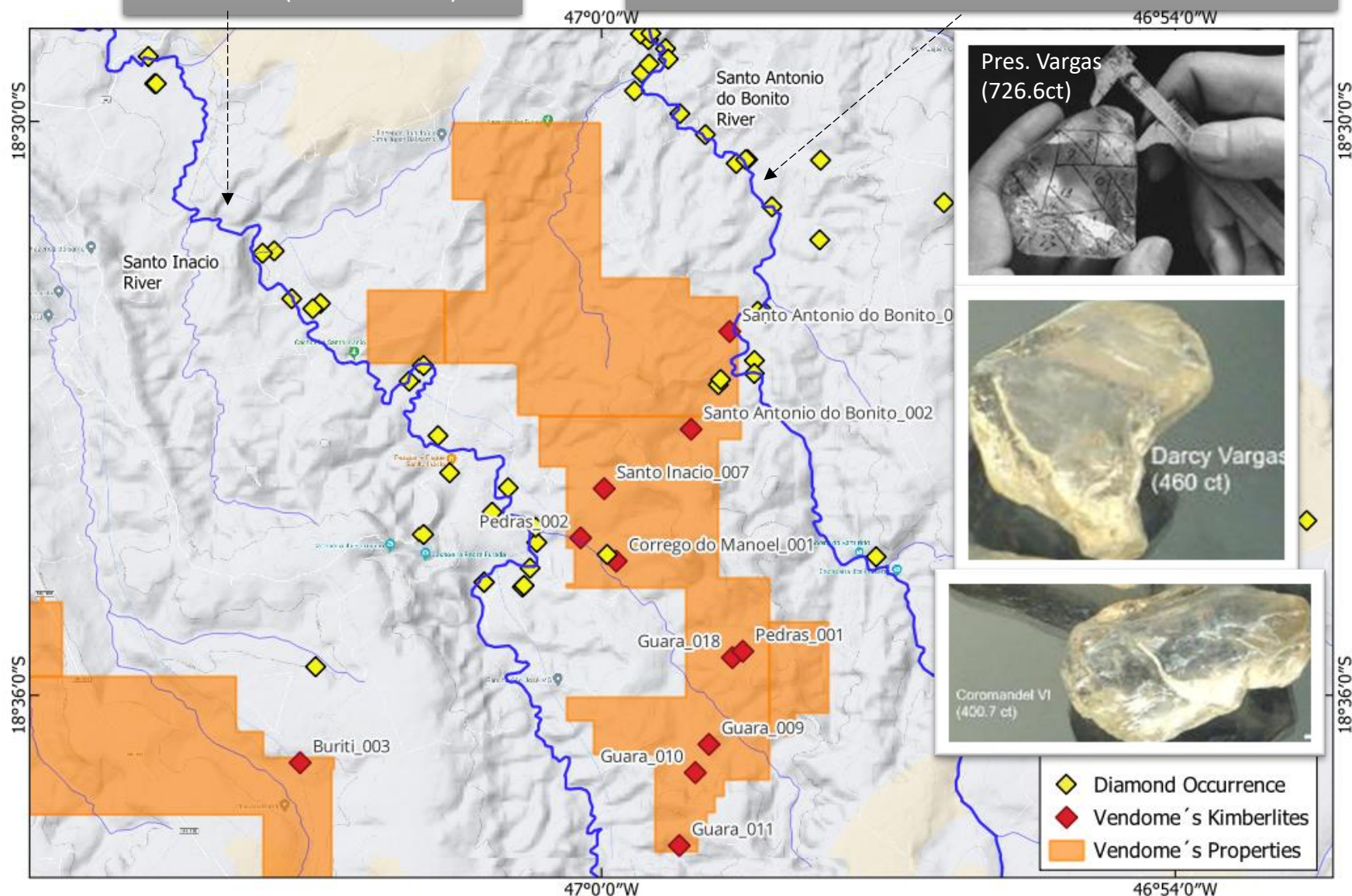
Sto. Antonio do Bonito River Diamonds - source of the largest Diamond recovered in Brazil the Presidente Vargas in 1938 (726,6cts), and other important ones: Sto. Antonio (602cts); Darcy Vargas (460cts); Coromandel IV (400.7cts); Diário de Minas (375cts); Bonito I (346cts); Vitoria II (328cts); and dozens of other large stones.

Vendome P1 - Kimberlites:

- Sto.Ant. Bonito 2: outcropping not tested.
- Sto.Ant. Bonito 4: outcropping not tested.
- Sto. Inacio 7: not tested/evaluated.
- Pedras 1: not tested/evaluated.
- Pedras 2: garimpo activity.
- Corrego Manoel 1: mine/garimpo activity.
- Guara 9: not tested/evaluated
- Guara 10: not tested/evaluated
- Guara 11: outcropping not tested.
- Guara 18: garimpo activity downstream.

Property Merits:

- Tres-Or's priority exploration area for a primary diamond source in vicinity of the Vendome alluvial activities;
- Focus on kimberlites close to diamond occurrences where recoveries of large and fancy-colored stones reported;
- Explore for kimberlite(s) source for the Sto. Inacio and Sto. Antonio do Bonito Rivers alluvial diamonds.

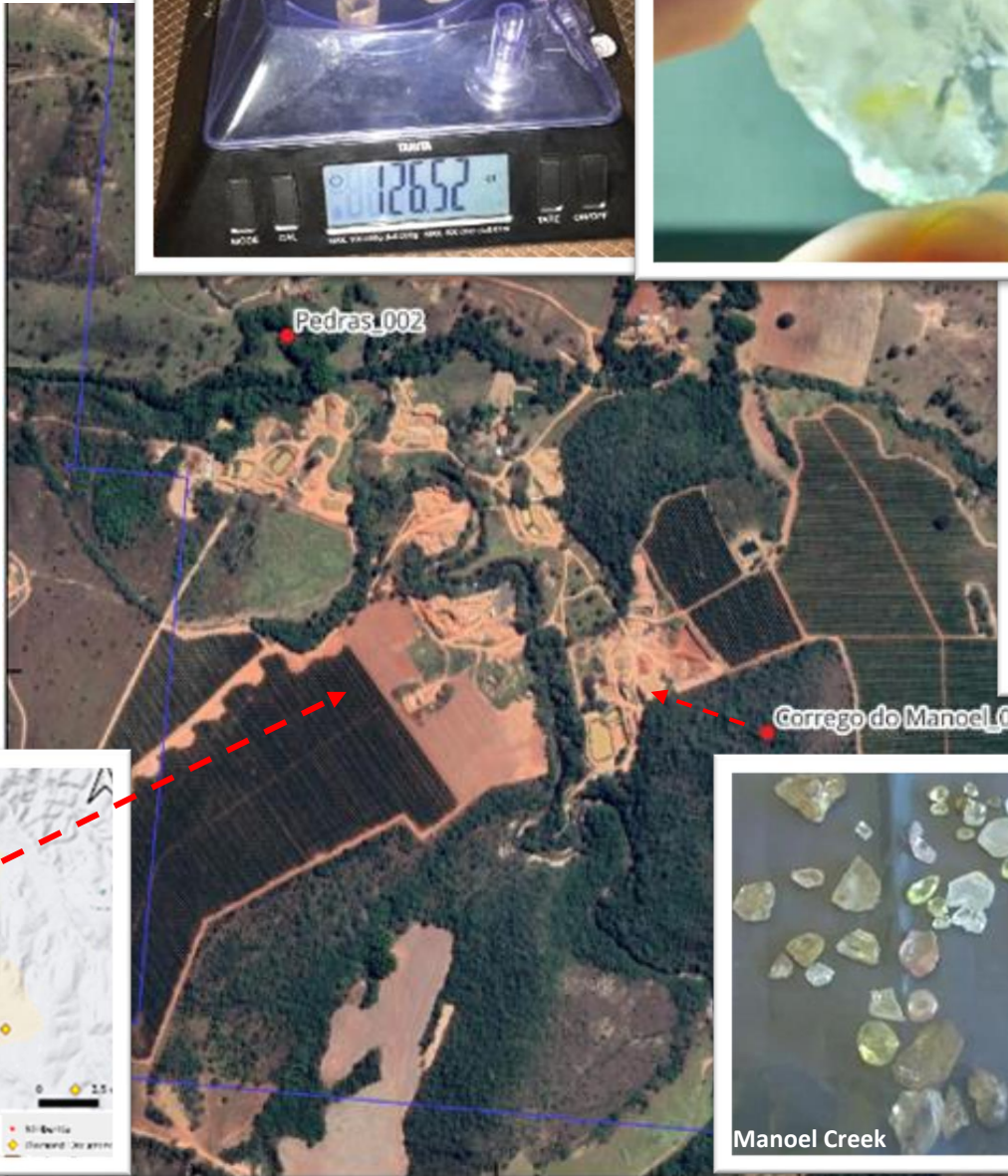




Vendome P1
Diamond Recovery:



Manoel Creek



Manoel Creek



Manoel Creek



8.88cts (pink)



90.01cts



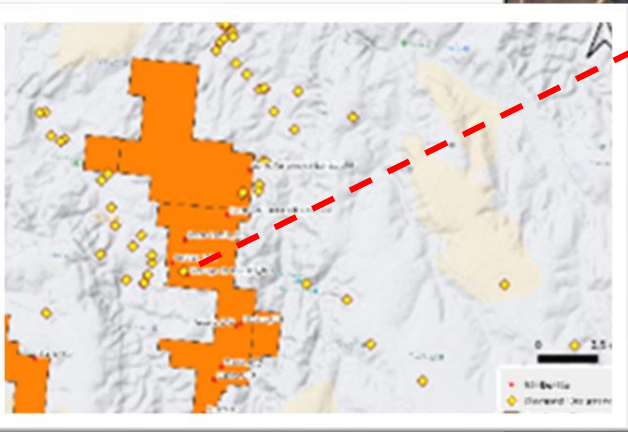
120cts (light pink)



Manoel Creek



Manoel Creek



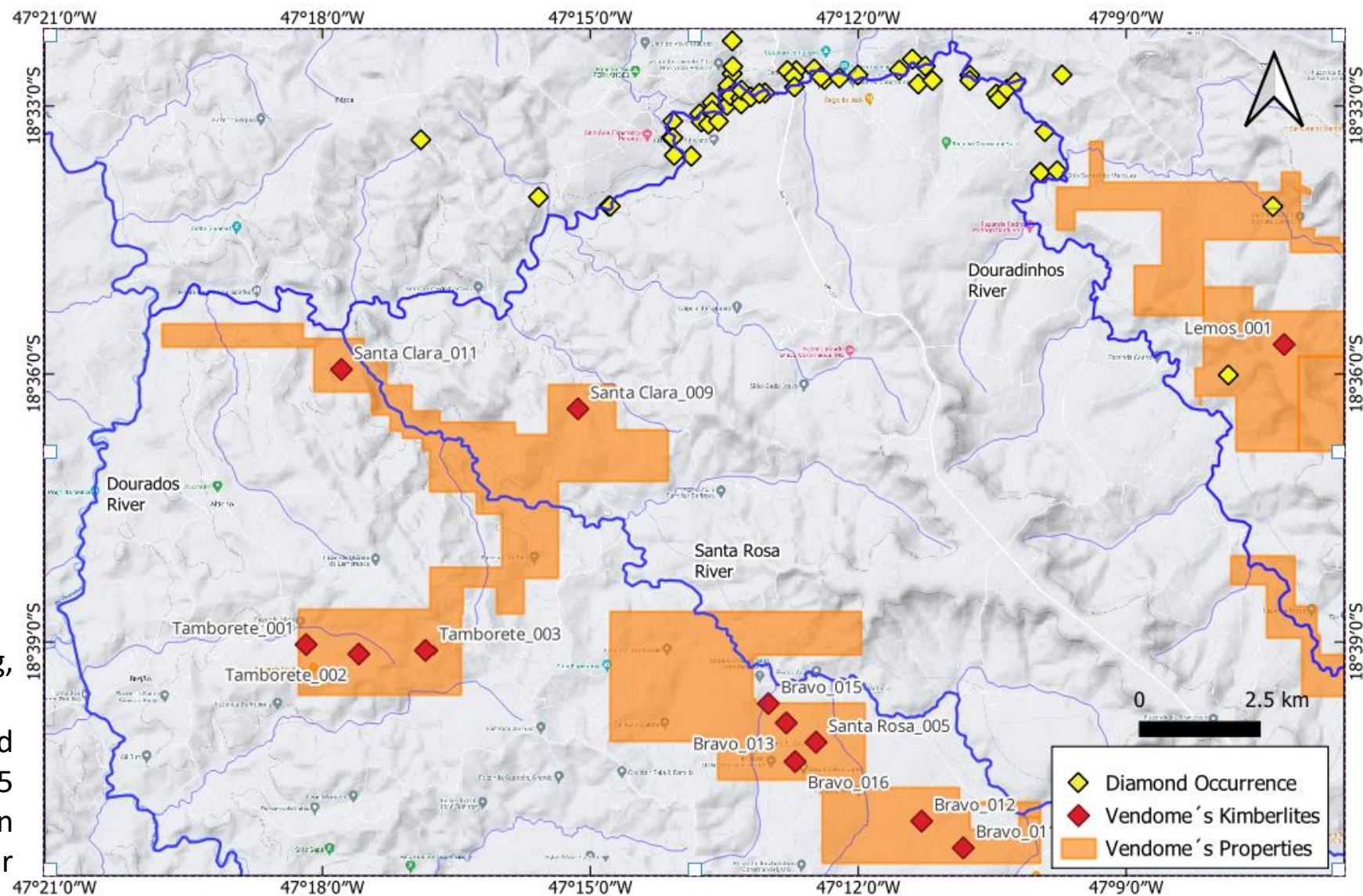
- Kimberlite
- ◆ Diamond Occurrence
- Vendome Property

Vendome P2 - Kimberlites:

- Santa Clara 9: identified by drilling;
- Santa Clara 11: alluvial mining nearby;
- Tamborete 1: not tested/evaluated.
- Tamborete 2: not tested/evaluated.
- Tamborete 3: not tested/evaluated.
- Bravo 11: identified by drilling;
- Bravo 12: identified by drilling;
- Bravo 13: identified by drilling;
- Bravo 15: not tested/evaluated.
- Bravo 16: not tested/evaluated.
- Santa Rosa 5: not tested/evaluated.

Property Merits:

- Santa Clara 11 kimberlite is outcropping, and alluvial mining activities downstream.
- The kimberlite occurrences could potentially be the sources of the 55 secondary diamond occurrences found in the northern limit of the property border (Douradinhos River).

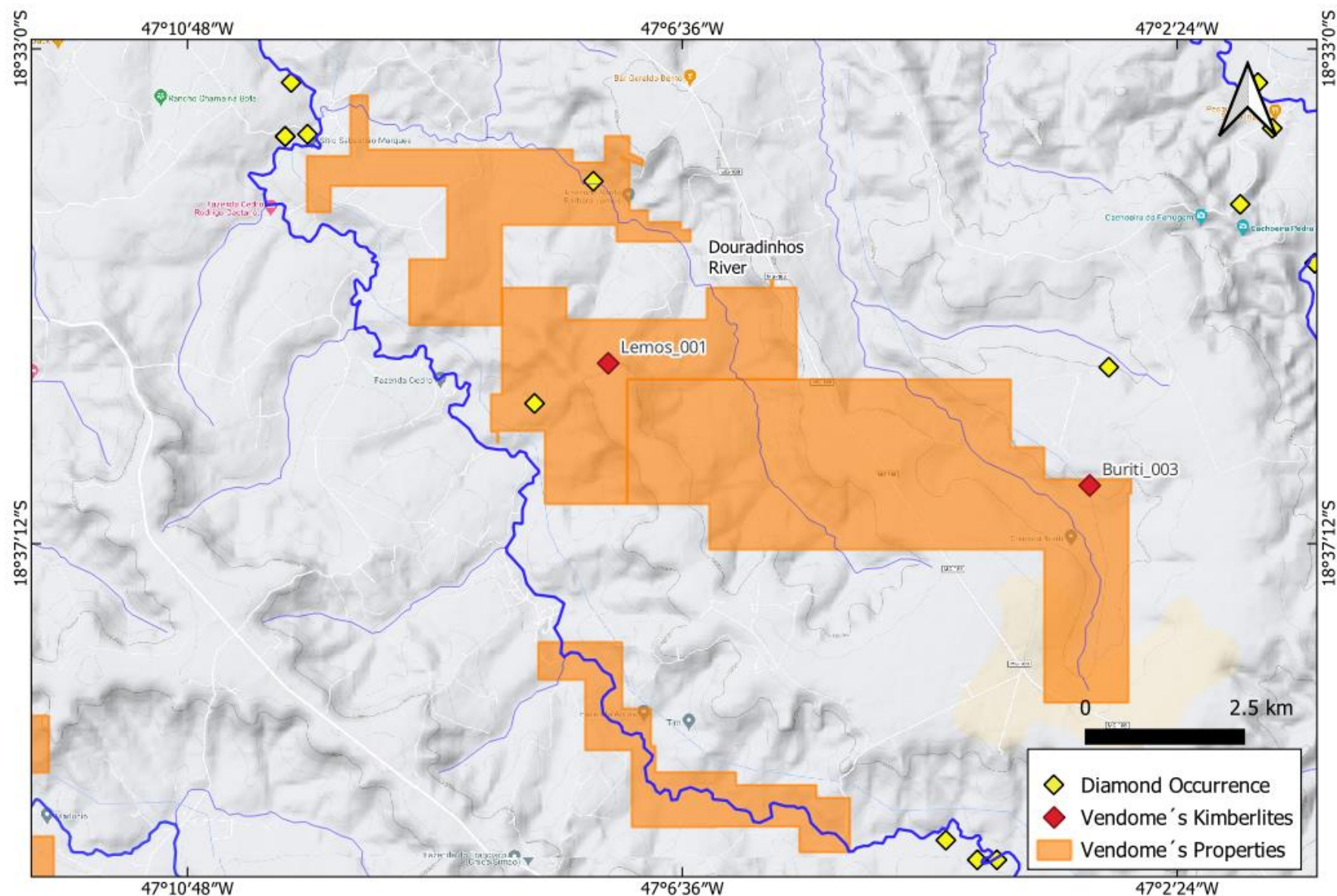


Vendome P3 - Kimberlites:

- Lemos 1: not tested/evaluated.
- Buriti 3: not tested/evaluated.

Property Merits:

- 2 secondary diamonds found in placers within the area;
- 7 secondary diamonds found in places surrounding the area border;
- Two occurrences of kimberlite to explore as possible sources of the secondary diamonds, and possibly the source of Rio Douradinhos diamonds;
- Possibility of finding more adjacent kimberlitic bodies.



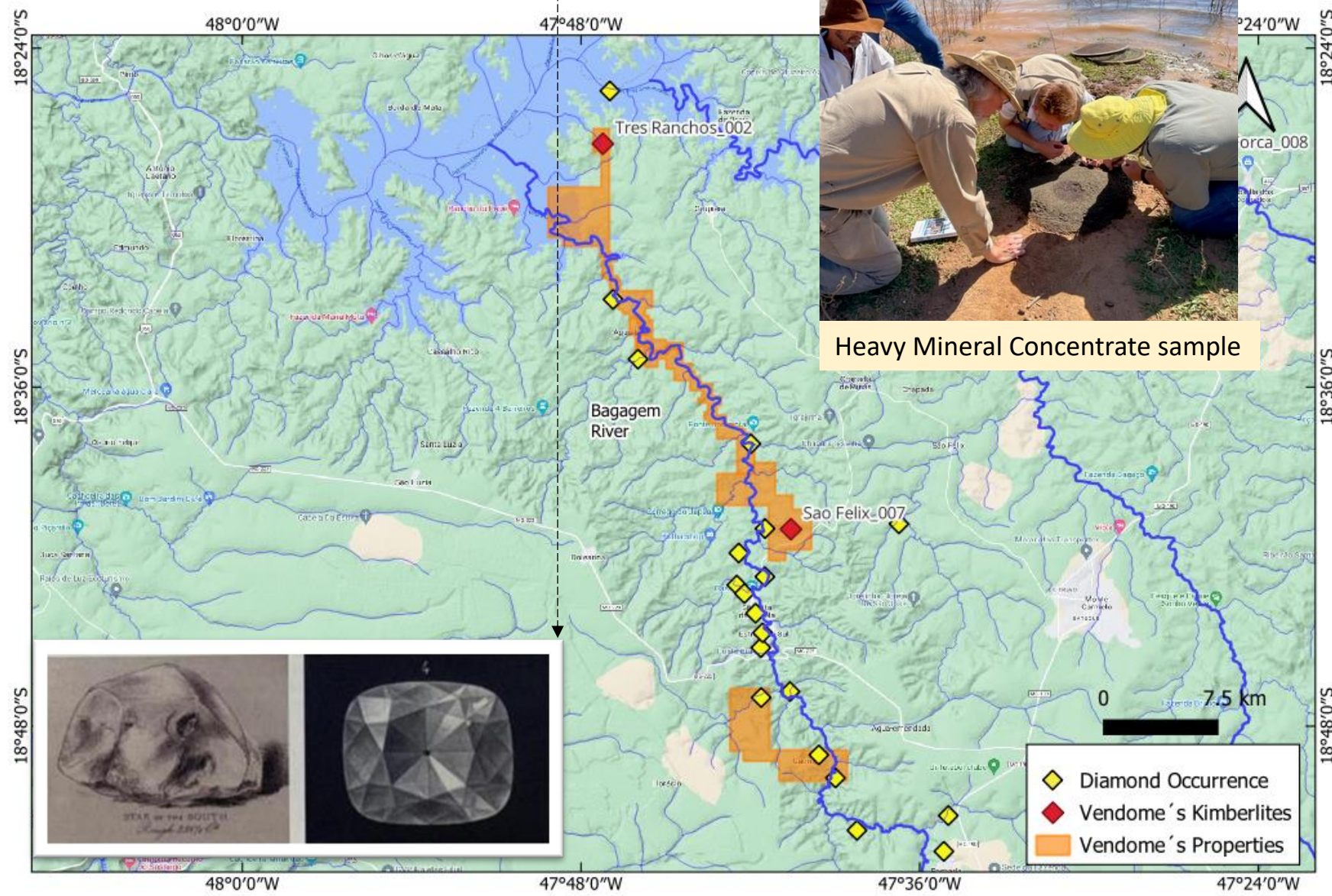
Bagagem River Diamonds - source of one of the famous Brazilian Diamonds: Estrala do Sul Diamond in 1856 (128.48cts).

Vendome P4 - Kimberlites:

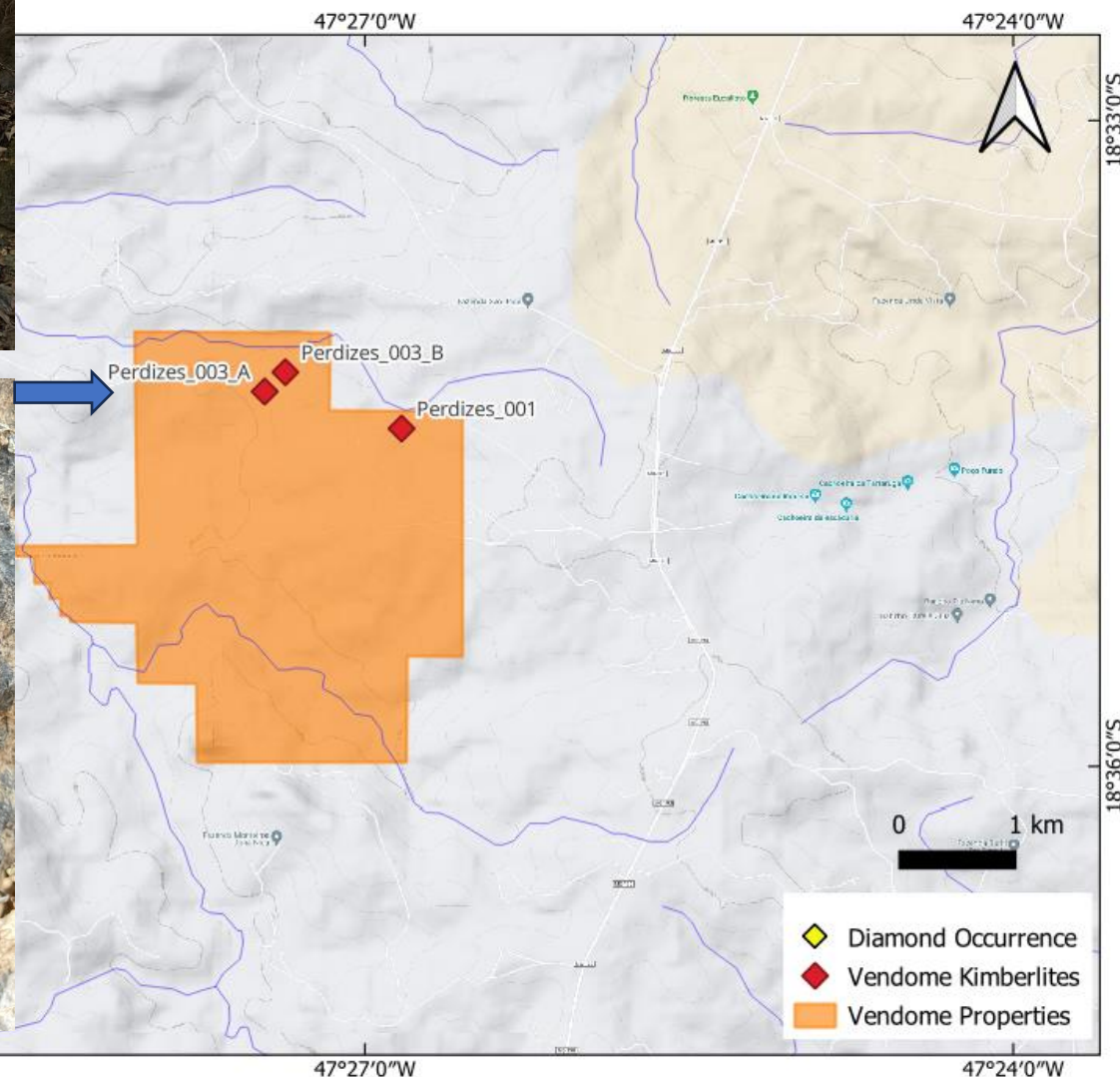
- Três Ranchos 2: not tested/evaluated.
- São Felix 7: not tested/evaluated.

Property Merits:

- 5 secondary diamonds found in placers within the area;
- 14 secondary diamonds found in places surrounding the area;
- Two occurrences of kimberlite to be explored as the potential sources of the secondary diamonds;
- Possibility of finding more adjacent kimberlite bodies.



Sampling Perdizes Kimberlite



Vendome P5 - Kimberlites:

- ❖ Perdizes 1: outcropping/not tested.
- ❖ Perdizes 3A: outcropping in drainage – De Beers excavated (148m³) (200 tonnes).
- ❖ Perdizes 3B: not tested/evaluated.

Property Merits:

- ❖ Kimberlites are outcropping, hyperbyssal facies, 1 diamond found in the river.
- ❖ Previous small-volume tests were carried out on surface soil/saprolite (Perdizes 3A) Groundmass of rounded olivine, chrome spinel. Sample to test fresh kimberlite rock for microdiamonds.
- ❖ Kimberlite described as a 2ha pipe for Perdizes 3A, may correlate with Perdizes 3B composing a single kimberlite pipe of larger area.
- ❖ Perdizes 1 may represent a dike marginal to the two main kimberlites Perdizes 3A and 3B.